

WHERE EVERY PART TELLS A STORY

# ENGINEERED FROM THE INSIDE OUT





# WELCOME

*Hello Readers,*

*Thanks for tuning in to the June/July edition of the EIK Newsletter!*

*This time around, we're shining a spotlight on something that plays a crucial role in keeping your operations running smoothly — after-sales support and spare parts. We understand how important it is to minimize downtime, and we're here to support you every step of the way.*

*Need help or looking to order parts? We've made the process simple — whether it's via WhatsApp, email, or online form, we'll show you how to reach us quickly and easily.*

*Plus, we're wrapping up some great highlights from the PAJPBM Exhibition & Luncheon — a fantastic opportunity to connect and showcase what we do best.*

*Thank you for your continued trust in EIK.*

*Warm regards,  
The EIK Marketing Team*



# TABLE OF CONTENT

## PRODUCT HIGHLIGHTS | 04

Support That Makes a Difference ■

More Than Just Tracks – It's a System ■

More Than Just Reach — It's What's Inside That Counts ■

Wear Parts That Work Smarter, Last Longer ■

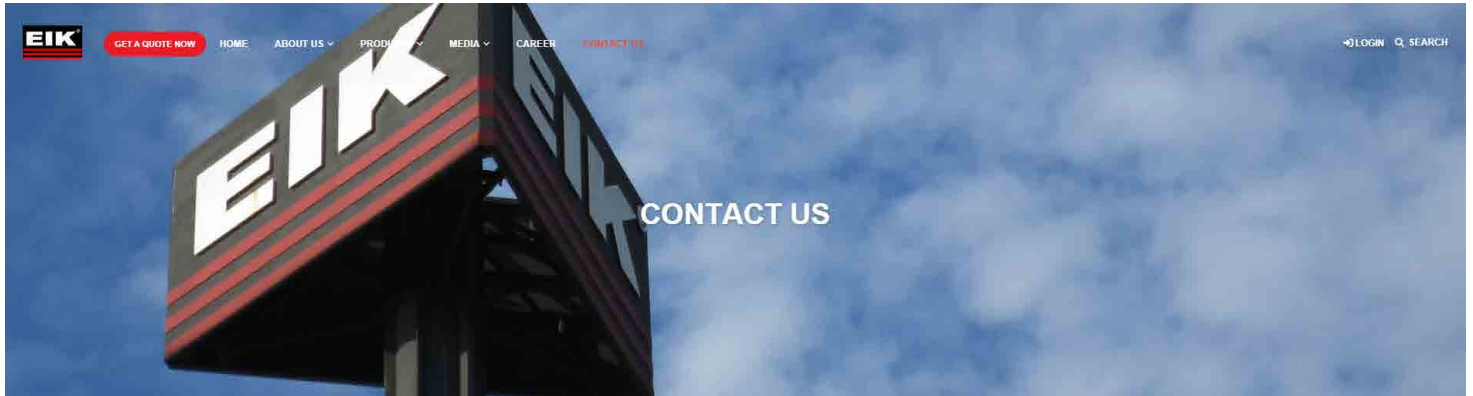
## EVENTS AND ACTIVITIES | 08

33<sup>rd</sup> PAJPBM Anniversary Celebration & ■  
Heavy Machinery Exhibition 2025

## EIK RELEASE & AVAILABILITY BULLETIN | 09

EIK Ready Stock 2025 ■

## Support That Makes a Difference



At EIK Engineering, our job doesn't end after delivery — that's where it really begins.

We understand how costly downtime can be. That's why we've built an after-sales system focused on speed, precision, and reliability — because keeping your machine running is our top priority.

### ■ Genuine Parts, Guaranteed Fit

We manufacture and track every component we build. That means when you request a part, we know exactly what fits — no guessing, no compatibility issues. Unlike aftermarket parts, EIK genuine parts are engineered specifically for your machine, ensuring long-term performance and reliability.

### ■ Fast-Moving Stock, Ready to Ship

We invest in keeping key parts readily available, especially fast-moving wear components — so when you need it, it's there. No long waits, no unnecessary downtime.

### ■ Support That Responds

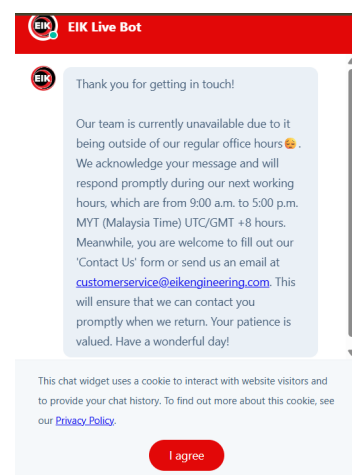
Whether it's a quick question or a critical issue, our in-house team offers real-time support through multiple channels :

#### WhatsApp



#### Direct email to your sales rep

#### Online chat via the EIK website



Expect fast responses — often within 24 hours — from experts who know your equipment inside and out.

We're not just here to fix problems — we're here to prevent them, guide you, and keep your operations moving forward.

## More Than Just Tracks – It's a System

At EIK, reliability isn't just about the machine — it's about the parts behind it. As a pioneer in amphibious undercarriage systems, we've built a reputation not just for performance in wetland and swamp terrain, but for the durability of the components that keep those machines moving.

In harsh, unpredictable environments, failure of even the smallest part can mean costly downtime. That's why every EIK spare part is built with precision, field-tested durability, and long-term serviceability in mind. These aren't off-the-shelf components — they're purpose-built for challenging job sites like mining pits, flood zones, and soft-ground operations.

### What Makes EIK Amphibious Parts Different :



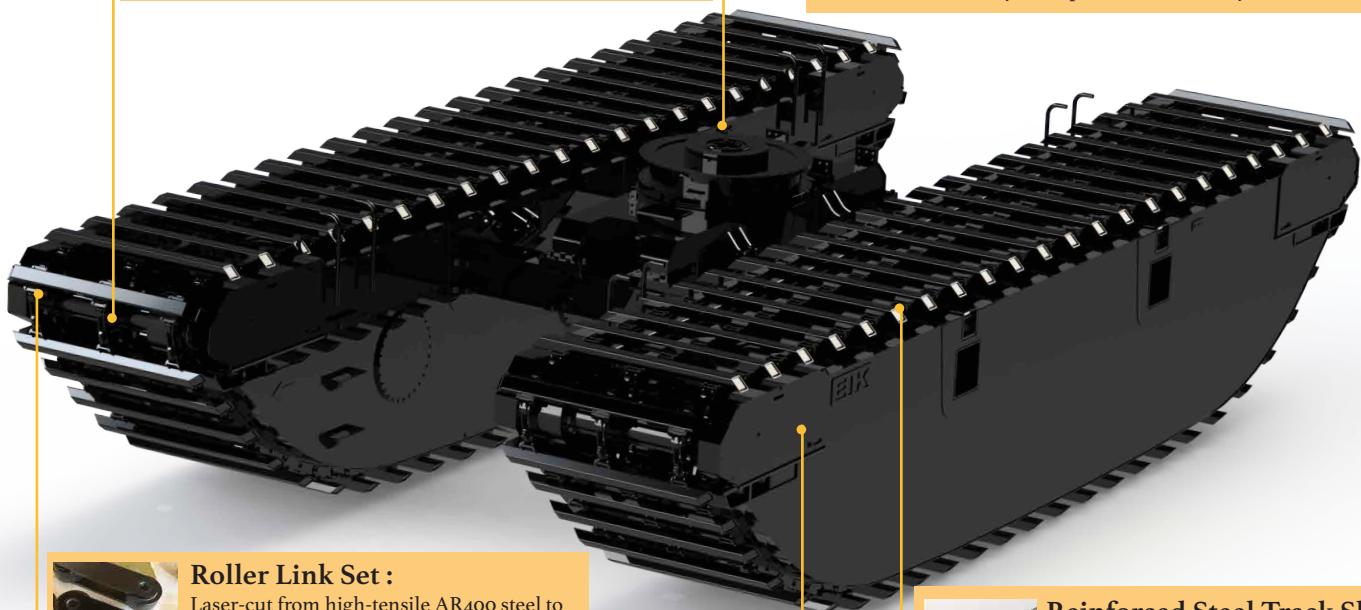
#### Replaceable Bolt-On Sprockets :

Made from high-strength Hardox® steel and designed for easy individual replacement without dismantling the entire axle system.



#### Custom Hydraulic Swivel Joint :

Designed with additional ports to support simultaneous control of pontoons and spuds from the cabin, improving safety and operational efficiency.



#### Roller Link Set :

Laser-cut from high-tensile AR400 steel to maintain structural accuracy and reduce deformation in high-impact terrain.



#### Reinforced Steel Track Shoes :

Internal ribs and support bars minimize deflection under load, increasing strength and lifespan under heavy-duty usage.



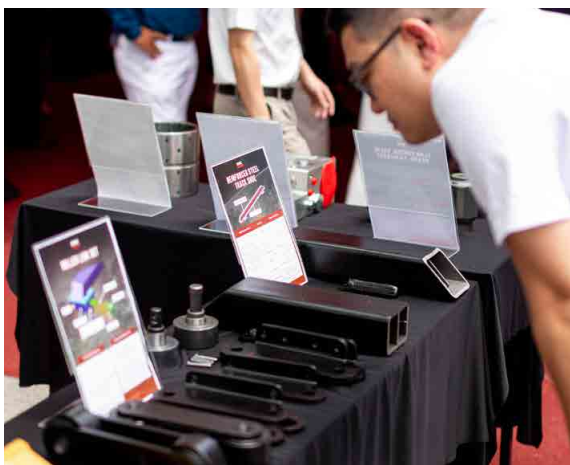
#### Pre-Greased Rollers & Hardened Bushings :

Precision-assembled and sealed to prevent internal wear and resist jamming — fully service-ready right out of the box.



#### Japan-Made Final Drive Motors :

Integrated with our patented multi-synchronous drive system for exceptional tractive force, especially in deep mud or unstable terrain.



These features aren't just enhancements — they're the result of decades of real-world learning, feedback, and continuous improvement.

EIK doesn't just sell undercarriages. We build systems that are easy to maintain, quick to service, and trusted to perform. And our spare parts are no different — from manufacturing precision to inventory readiness, we design every detail with one goal: less downtime, more uptime. Whether you're facing remote terrain, tight project timelines, or challenging site conditions, EIK parts deliver where it counts — on the ground, under pressure, and over time.



## More Than Just Reach — It's What's Inside That Counts

When it comes to long reach attachments, EIK Engineering has spent over 20 years leading the way — supporting deep excavation, slope trimming, dredging, and other hard-to-reach applications.

But what sets us apart isn't just how far our arms can reach — it's the precision and durability of the parts behind every system.

Our long reach solutions fit machines from 6-ton to 190-ton class, with working lengths from 7 to 32 meters. With up to 90% vertical integration, many of our critical components — from bushings and hydraulic tubes to pins and cast parts — are made in-house or by our sister companies. This gives us better control over quality, compatibility, and lead time.

At a glance, most long reach booms may look similar — but what's inside makes all the difference. At EIK, it's the unseen engineering that delivers long-term value.

### What Makes EIK Long Reach Parts Different :

#### Graphite Bushings



Self-lubricating, wear-resistant, and corrosion-resistant — perfect for continuous motion under load.

#### Seamless Hydraulic Tubing



Manufactured without weld seams for stronger pressure tolerance and fewer leak points.

#### Metal Cast Boom Boss



Engineered with contoured geometry to better distribute stress and reduce the risk of fatigue failure.

#### OEM-Grade Bucket Cylinder



Matched to CAT-equivalent specifications, ensuring consistent force and smooth stroke performance.

#### Hardened & Chromed Pins



Made from AISI 4340 / 4130 high-tensile steel with chrome plating to reduce friction and wear.

#### Flow Control Valve

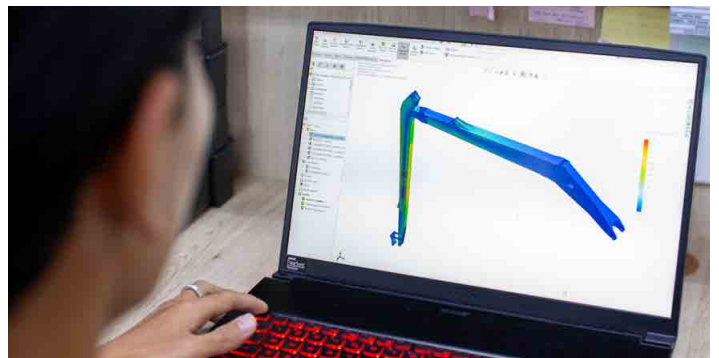


Adjustable valve for stick speed control — offering improved operator control and motion smoothness.

#### Load-Holding Valve



Prevents unintentional boom/stick drop, protecting both operators and the job site.



Every part in our long reach system is designed to reduce wear, extend service life, and simplify maintenance — especially under high-stress, high-cycle conditions. Because you're not just buying an attachment — you're investing in uptime. EIK long reach systems and spare parts have helped customers around the world go the distance — engineered for endurance, built for the real world.

## Wear Parts That Work Smarter, Last Longer

EIK excavator buckets are purpose-built for heavy-duty digging, loading, and material handling across construction, mining, dredging, and reclamation projects. These buckets don't just deliver strength—they're designed with precision and durability in mind.

In real-world use, it's often the bucket components, not the structure, that wear down first. That's why EIK prioritizes both the quality of high-wear parts and how fast they can be replaced.

### What sets us apart?

Each EIK bucket is engineered to integrate seamlessly with our Long Reach systems—forming a complete solution ideal for deep excavation and river or slope work. This synergy between boom and bucket gives operators longer reach, better control, and improved on-site efficiency.

### ■ Genuine Parts, Ready When You Need Them

EIK offers a full range of precision spare parts—from cutting edges and side cutters to wear plates, adapters, and other ground engaging tools (GET). Every part is built to our own high standards for durability and compatibility.

### Key Features:

#### Easy Bolt-On Installation

No welding required, ready-to-install out of the box.

#### Standard Tool Compatibility

Simple replacements, no special tools needed.

#### OEM-Matched Fit

Precision-engineered for reliability and long wear life.

#### Hardened for Impact

Built from premium materials to handle tough environments.

#### Fast Availability

Same-day shipping available for most items from our global stock.

#### Global Support

Reliable delivery through our international distribution network.

EIK parts aren't just replacements—they're a direct extension of our product quality. Every bolt, edge, and tooth is designed to keep your operations running smoothly with less downtime and fewer surprises.





## 33<sup>rd</sup> PAJPBM Anniversary Celebration & Heavy Machinery Exhibition 2025



The 33<sup>rd</sup> PAJPBM Anniversary Celebration & Heavy Machinery Exhibition 2025 brought together some of the best in the industry — and we were proud to be right at the center of it all.



Throughout the exhibition, we had the pleasure of connecting with industry professionals, customers, and partners who stopped by our booth to explore our excavator attachments, view pre-owned units, or engage in meaningful conversations with our team. We sincerely appreciate your time, interest, and continued trust in EIK.



A special thank you goes out to our long-standing customer Pembinaan Zulma for your ongoing partnership and confidence in our products. It's customers like you who motivate us to keep raising the bar.

This year, we showcased a lineup that truly represents our Built to Perform promise — featuring equipment that's been tested and proven in real job sites:

- Hitachi ZX130-5G Excavator
- AM140 Amphibious Undercarriage with
- Steel track shoes (500+ working hours)
- 12m Long Reach Boom for ZX130-5G
- 1.8m<sup>3</sup> Rock Bucket for DX420LCA
- 0.5m<sup>3</sup> Wide Digging Bucket for CAT312D
- Spare Parts Display — Showcasing the difference in quality and build between EIK and others

We're also pleased to share that two buckets were sold on the spot, reflecting the continued demand for robust, high-quality attachments that can handle today's toughest project requirements.



A key moment of the event was the keynote by YB Anthony Loke, reaffirming the government's commitment to major infrastructure growth — particularly in ports, railways, and highways. Projects like the Westports expansion, which aims to double capacity from 14 to 28 million TEUs annually, present major opportunities for the heavy machinery industry. EIK is proud to support these developments with trusted equipment and technical expertise.

As we wrap up this milestone event, we're energized by the conversations we had, the new opportunities ahead, and the strong community we're part of.

Thank you for making this exhibition one to remember. We look forward to meeting you again at the next one!



# IN STOCK & READY TO SHIP

**ORDER YOUR EIK ATTACHMENTS NOW!**

Maximize your machine's efficiency with our high-quality excavator attachments, now in stock and ready for immediate dispatch! No waiting, no delays—just reliable, durable, and high-performance attachments delivered to you fast.

Explore our range of products to find the perfect attachments for your excavator.

## LIMITED STOCK AVAILABLE

### AMPHIBIOUS SERIES



Model

AM350-3

### AMPHIBIOUS SERIES



Model

AM70-1ER

### FRONT REACH SERIES



Model

JD300G

Length (FT / M)

75FT / 18.5M

### FRONT REACH SERIES



Model

SK380XDLC-10

Length (FT / M)

53FT / 16M

### BUCKET SERIES



Bucket Type  
Wide Ditching  
Bucket

Model

CAT312D

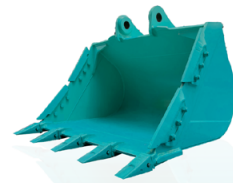
Size (Inch)

48

Capacity (M3)

0.50

### BUCKET SERIES



Bucket Type  
Heavy Duty  
Bucket

Model

SK350LC-10

Size (Inch)

54

Capacity (M3)

1.83

### BUCKET SERIES



Bucket Type  
Heavy Duty  
Bucket

Model

ZX280-5G

Size (Inch)

65

Capacity (M3)

1.60

### GRAB SERIES



Product Type  
Hydraulic Orange  
Peel Grab

Model

ZX350

Size

1.2M<sup>3</sup>

### OTHER ATTACHMENTS



Product Type  
Counterweight

Model

PC210-10M0

Size

1.2 Ton

Browse our full range of brands and models below



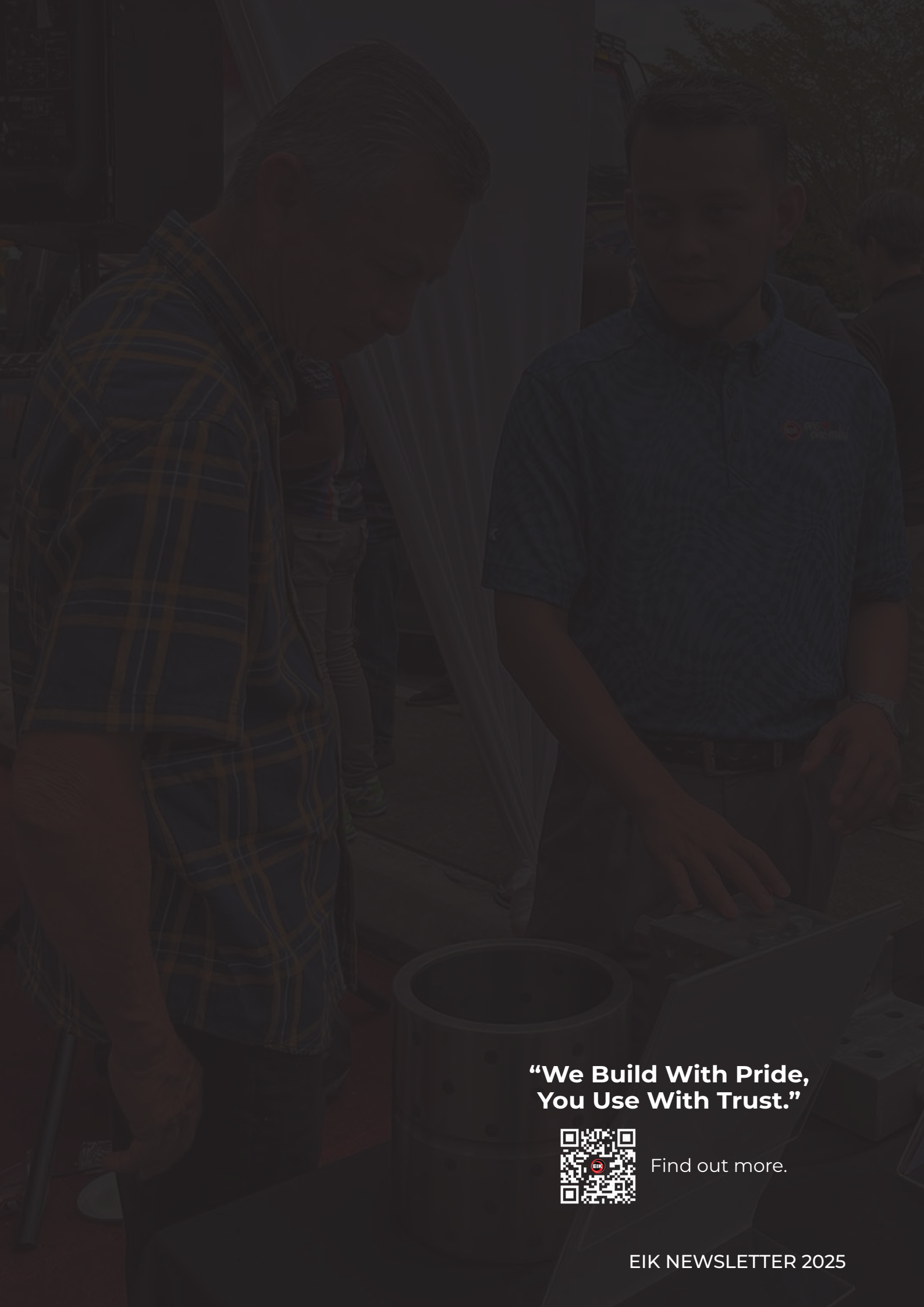
Contact Us  
+60 16-734 5100



Email Us  
sales@eikengineering.com.my



Follow Us  
www.eikengineering.com



**“We Build With Pride,  
You Use With Trust.”**



Find out more.

EIK NEWSLETTER 2025