

MINIMIZE EFFORT MAXIMIZE REACH

BIG BOOM ATTACHMENTS II

" REACH more,
make more "



WELCOME



Welcome back !

In this issue's highlight, we continue to revisit some of the monumental solutions we've built and delivered to our valued customers over the years. From projects of varying sizes to diverse functions like mining, marine dredging, river dredging, breakwater construction, and more, our commitment remains steadfast in maximizing the service life of our products.

Furthermore, we're thrilled to present a lineup of captivating events and activities in this issue. From industry visits by our esteemed partners and guests from the United States to engaging interactions with university students, these opportunities provide invaluable platforms for knowledge exchange and collaboration.

Thank you for being an integral part of our community.

Cheers,,
EIK Marketing Team





TABLE OF CONTENT

PRODUCT HIGHLIGHTS | 04

Powerful Solutions for Maximum Reach - Part II ■

EVENTS AND ACTIVITIES | 06

Building a Culture of Teamwork and Innovation ■

Cultivating Collaborative Partnerships Through
Shared Experiences and Cultural Exchange

Celebrating Unity and Gratitude ■
EIK's Annual Raya Open House Event

Industrial Visit ■
University of Southampton, Malaysia



EIK Long Reach for Hitachi EX1900

Powerful Solutions for Maximum REACH Part II

The EIK EX1900 Long Reach is engineered to excel in efficiency, reliability, and durability across diverse job environments. Specifically tailored for a deep-sea dredging project in Turkey, this marvel of engineering is meticulously crafted with Weldox 700 and EH36 high-strength structural steel, guaranteeing unparalleled performance and durability, even in the most demanding environments.

With a remarkable reach extending 27 meters from the machine center, the long reach empowers operators to navigate remote underwater locales effortlessly, enhancing both productivity and safety in dredging operations. Powered by an OEM hydraulic cylinder, it ensures precision and power in every task, from removing sediment layers to handling heavy debris. Its design prioritizes safety without

sacrificing efficiency, ensuring optimal performance in demanding underwater environments.

Versatility is at the core of the design, allowing it to adapt seamlessly to various seabed conditions and project requirements. With a suite of attachments and customization options, it effortlessly tackles tasks ranging from deep-sea dredging to shoreline projects, ensuring maximum flexibility and performance.



Perfect for heavy-duty applications in construction, mining, quarry, and aggregate projects, the EIK PC1600 Super Long Reach, one of the flagship offerings in our extensive product lineup, is engineered to redefine excavator performance in very challenging environments.



EIK Long Reach for Komatsu PC1600

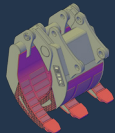
As an attachment that is typically used in various working environments that require extended reach capabilities, it is often employed and operate in dredging projects where reaching long distances is highly necessary. Whether navigating excavation tasks on land or underwater, this equipment stands out as one of the preferred choices for unmatched performance and reliability in every operation.

Did you know?

Our Front Reach Series comes with a range of interchangeable attachments to meet your specific needs.



Bucket



Grapple



Orange Peel Grab

White color boom, it must be a Liebherr! A decade ago, amidst a landscape of innovation, EIK embarked on a groundbreaking journey that marked a significant milestone as EIK proudly became the first fabricator in Asia to undertake the design and construction of a remarkable 120-tonne class Liebherr 984 Long Reach.

Meticulously crafted with 690MPa steel material, our endeavor was not merely about building a product; it was about redefining standards and pushing boundaries. The choice reflects our unwavering dedication, not only to enhancing reach capabilities but also to guaranteeing steadfast reliability, achieved through the application of high-strength structural-grade tensile steel.

Yet, our journey was not without its challenges. In the absence of drawings and limited dimensional information, our design and engineering team embarked on a laborious process of data collection and collaboration. In this endeavor, we extend our heartfelt gratitude to our esteemed

PC2000 Standard Boom

Designed to be fixed on the PC2000 for marine dredging projects, the PC2000 Standard Boom stands out as one of the consistently requested models within the big boom range, with numerous repeat orders received over the years. The most recent iteration was completed last year to address the unique requirements of port projects in East Asia.



EIK Long Reach for Komatsu PC2000

With sustainability as a core focus, this boom features a remarkable length of 13 meters, offering unparalleled versatility and efficiency for port operations. Its environmentally responsible construction ensures minimal impact on marine ecosystems, making it the preferred choice for projects prioritizing eco-conscious practices.



customer, whose unwavering support and professionalism were instrumental in overcoming every obstacle.

As we reflect on this milestone from a decade past, we are reminded not only of our achievements but also of the spirit of innovation and collaboration that propels us forward. With each challenge surmounted and each milestone reached, we reaffirm our commitment to excellence and our relentless pursuit of pushing the boundaries of possibility.



EIK Long Reach for Liebherr 984

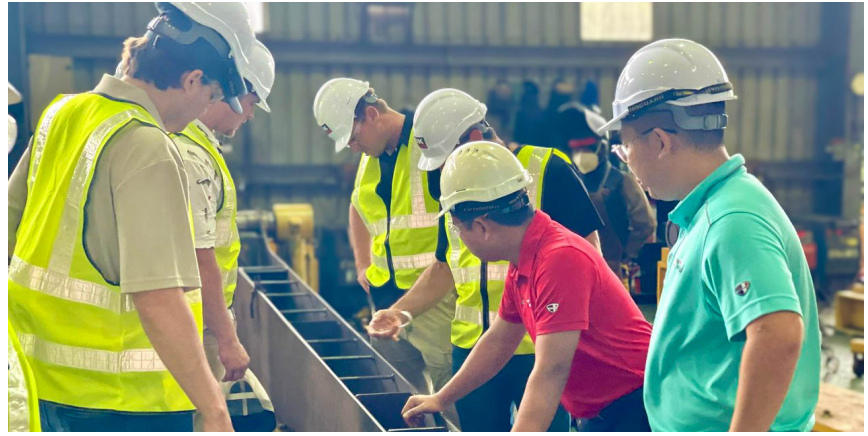
Building a Culture of Teamwork and Innovation



When attachment design and development work needs to be undertaken on your excavator, it is important that it is done by a professional. At EIK, we consistently strive to maximize customer satisfaction through comprehensive training programs provided to both our partners and internal staff members. This approach not only fosters continuous learning but also encourages internal collaboration, enabling individuals to learn from each other and stay updated on the latest design improvements and technical advancements.



Shortly after the Raya holiday, our design and engineering team came together over the weekend for a blend of training and team-building activities. As our engineering team continued to generate innovative solutions, it was not just about what they created but also how they did it together. In the midst of creativity, friendships grew stronger, challenges became easier to overcome, and every success, no matter how small, was significant.



Cultivating Collaborative Partnerships Through Shared Experiences and Cultural Exchange

What a thrilling moment it was as we reflected on the exciting moments shared with our esteemed partner, EIK Solutions, and our guests from the United States! We had the privilege of hosting them for an insightful factory tour, covering both our Headquarters and Ayer Hitam plant. This provided an opportunity to showcase the latest advancements resulting from our recent restructuring efforts. Not only did this occasion facilitate in-person reunions, but it also sparked valuable exchanges of ideas and feedback, fostering a culture of continuous improvement.

In the spirit of Malaysian hospitality, we extended a heartfelt welcome to our guests by inviting them to partake in a pre-Ramadan Luncheon with our team. This gathering served not only as a gesture of hospitality but also as an opportunity for cultural exchange, where our guests could immerse themselves in the rich tapestry of Malaysian culture through its culinary delights. From traditional dishes bursting with flavors to the warmth of communal dining, the luncheon provided an authentic experience that showcased the essence of Malaysian hospitality.



As we set our sights on the future, we draw inspiration from the connections forged during this memorable occasion and the shared commitment to progress. In collaboration with our esteemed partners, we remain steadfast in our commitment to charting a path toward excellence. Stay tuned for updates on our ongoing initiatives and collaborative ventures as we continue this journey towards greatness together.

Celebrating Unity and Gratitude

EIK's Annual Raya Open House Event

EIK Meriahnya Raya!

The holiday spirit continues to thrive within our EIK family as we transition from the festivities of Chinese New Year to the warmth and joy of Hari Raya Aidilfitri! We recently came together with our cherished EIK family to commemorate this special occasion at our annual Raya Open House event. It was a time of warmth, camaraderie, and unity as we gathered to express gratitude and appreciation for the unwavering dedication of our EIK family members.

Amidst the vibrant decorations and the aroma of traditional delicacies, our hearts were filled with gratitude and unity as we celebrated the spirit of togetherness. We extend our heartfelt thanks to each and every member of our dedicated team for their unwavering commitment and tireless efforts throughout the year. It is through their hard work and dedication that we continue to thrive as a company and as a family.

As we exchanged warm greetings and shared heartfelt moments, the bond within our EIK family grew even stronger. Together, we look forward to continuing our journey of growth, innovation, and success in the days ahead. May the spirit of Hari Raya continue to inspire us all as we journey forward together towards prosperity and greater success.



Industrial Visit

University of Southampton, Malaysia



Weeks before the Raya long holiday, we welcomed engineering students from the University of Southampton Malaysia to our Iskandar Puteri Corporate Headquarters for an industrial visit and networking session! Our team had a fantastic time showing them around the factory, providing them with an insider's view of what it's like to work at EIK, and sharing insights about the manufacturing industry. Our aim was to bridge the gap between classroom learning and real-world engineering experiences.

At EIK, we believe in the importance of investing in the next generation of innovators and engineers.

We were delighted to have the opportunity to inspire these young minds, contributed to the students' learning journey, and we look forward to fostering more meaningful connections within the engineering community.



www.eikengineering.com

**“We Build With Pride,
You Use With Trust.”**



Find out more.