

SUPER LONG FRONT

AN ATTACHMENTS REACH NO LIMITS



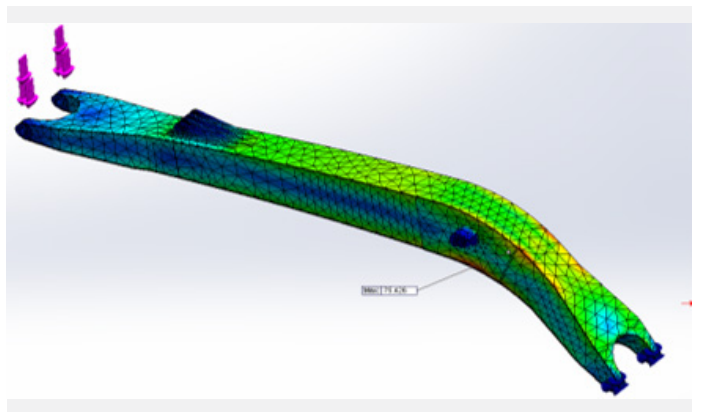


Are you looking to bolster your fleet of excavators? With our extensive experience in designing and manufacturing long reach booms, you can take your fleet to the next level; where standard booms fail to get the job done. EIK long reach booms can help you to achieve more than 50% digging depth and forward reach over a standard boom, which saves both time and money.

Structural grade high tensile steel is used in the production of our equipment. Each piece is designed with various grades of tensile steel depending on the nature of the application. We supply long reach packages for various excavator models ranging from 10 to 200 metric tons.

Product design is accomplished by utilizing the latest CAD software, simulation via advanced Finite Element Analysis (FEA) tools to ensure optimum design integrity.

SAVE TIME & MONEY



Application

- Marine and river dredging either on land or on barge.
- Breakwater construction.
- Basement and deep foundation excavation.
- Construction of ditches, levees and pond maintenance.
- Tailing dam maintenance in mining operation.

Features

- Use of high strength steel for increased reliability.
- Use of OEM grade bucket cylinder, easy access to spares globally.
- Robotically welded for superior workmanship and consistency.
- Upgrade bucket to HD bucket.
- FEA Analysis advancement.
- Premium pins and hoses.
- High Return on Investment.

Our success comes from having a solid foundation. We've invested in the latest high-tech equipment to stay up-to-date and to exceed customers' expectation. Our facilities are equipped with robotic welding machines and CNC line-bore machines as the booms and arms require tight tolerance and precision. They are processed with state-of-the-art machinery to ensure the highest attainable quality.

Our ultimate goal is to maximize the service life of our products. Each long reaches is shot blasted to ensure that the surface is thoroughly clean and free from contaminants and rust before paint is applied.

Paintworks are carried out in our industrial-grade paint room by highly-trained specialists. A layer of primer is applied prior to the final coat of paint which include color matching for your machine.

The finished product is not complete without the final QC inspection. We thoroughly check each piece of equipment prior to packaging. A final round of post-packaging inspection is carried out before it is released for shipment.

With our meticulous standards and tremendous work ethic, customers all around the world have come to realize the value and quality of EIK long reach attachments.

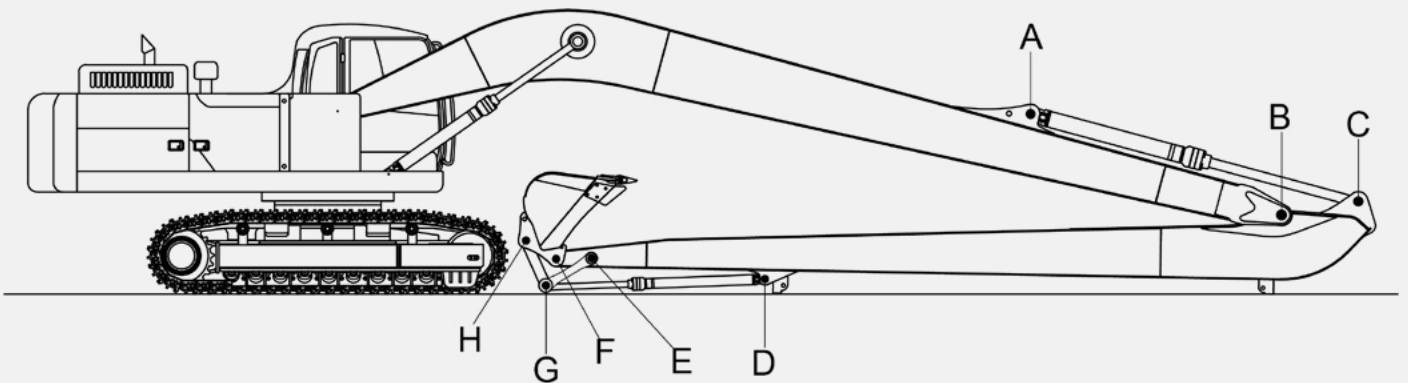


Long Reach Package

Each long reach package comes standard with the following items:

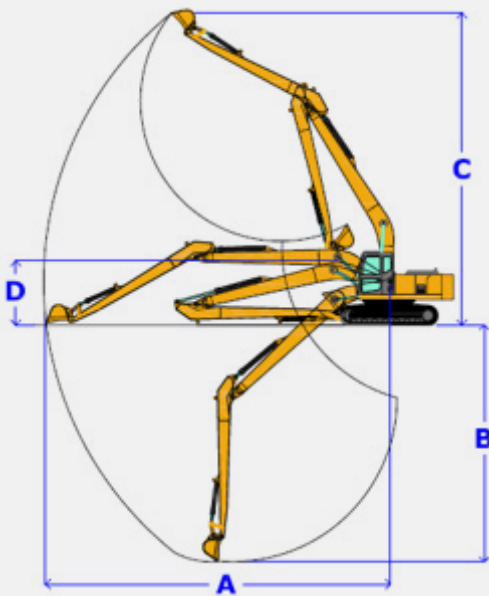
- 1 x boom
- 1 x stick/dipper arm
- 1 set of hydraulic line for arm cylinder
- 1 set of hydraulic line for bucket cylinder
- 1 x bucket cylinder/ram
- 1 x bucket cylinder and hose
- 1 x linkage set
- 1 x bucket

Pins refer to the table below:

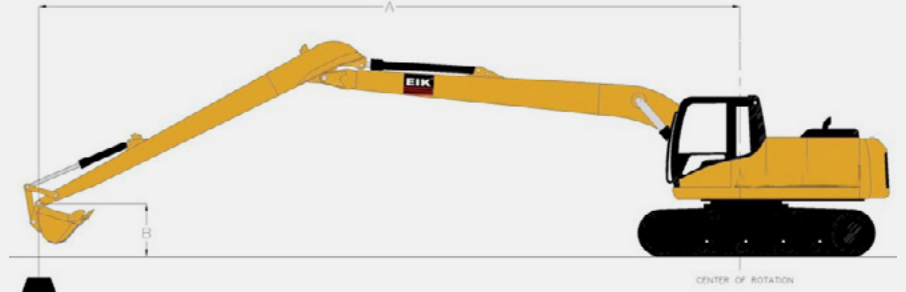


A	Arm/Stick Cylinder Head Pin
B	Boom Front Pin
C	Arm/Stick Cylinder Rod Pin
D	Bucket Cylinder Head Pin

E	Arm Link Pin
F	Bucket And Arm Link Pin
G	Bucket Cylinder Rod Pin
H	Bucket Link Pin



Specifications



Excavator Operating Weight	Length		A Max. Reach		B Max. Depth		C Max. Height		D Boom Height		Approximate Bucket Capacity	
	m	ft	m	ft	m	ft	m	ft	m	ft	m ³	Yard ³
3 - 5 ton (6,600 - 11,000 lb)	7.0	23'	7.39	24' 3"	4.92	16' 1"	5.77	18' 11"	1.67	5' 5"	0.11	0.14
6 - 8 ton (13,200 - 17,600w lb)	9.0	30'	8.42	27' 7"	5.22	17' 1"	9.50	31' 1"	2.18	7' 1"	0.26	0.34
10 - 14 ton (24,200 - 30,800 lb)	12.0	40'	12.37	40' 6"	8.15	26' 8"	12.75	41' 10"	2.39	7' 10"	0.35	0.40
15 - 18 ton (33,000 - 37,400 lb)	13.0	42'	13.02	42' 8"	9.29	30' 5"	12.74	41' 4"	2.45	8' 0"	0.45	0.58
20 - 22 ton (39,600 - 48,400 lb)	14.0	46'	14.38	47' 2"	10.15	33' 3"	13.18	43' 2"	2.63	8' 7"	0.50	0.65
	15.5	50'	15.52	50' 11"	11.18	36' 8"	13.94	45' 8"	2.68	8' 9"	0.45	0.58
	16.5	54'	16.88	55' 4"	12.46	40' 10"	14.72	48' 3"	2.72	8' 11"	0.45	0.58
23 - 26 ton (50,600 - 57,200 lb)	17.0	56'	17.28	56' 8"	12.18	39' 11"	15.92	52' 2"	2.87	9' 5"	0.50	0.65
	18.5	60'	18.60	60' 0"	12.99	42' 7"	16.68	54' 8"	2.96	9' 8"	0.45	0.52
27 - 32 ton (59,400 - 70,400 lb)	18.5	60'	18.63	61' 1"	13.88	45' 6"	15.71	51' 6"	3.04	9' 11"	0.65	0.85
33 - 38 ton (72,600 - 83,600 lb)	18.5	60'	18.47	60' 7"	14.36	47' 1"	14.66	48' 1"	3.33	10' 11"	0.75	1.04
	20.0	65'	20.01	65' 7"	15.90	52' 2"	15.32	50' 3"	3.43	11' 3"	0.65	0.91
40 - 45 ton (88,000 - 99,000 lb)	21.0	69'	21.33	69' 11"	16.36	53' 8"	16.56	54' 4"	3.65	11' 11"	0.90	1.17
	22.0	72'	22.58	74' 11"	17.59	57' 8"	17.08	56' 0"	3.71	12' 2"	0.80	1.04
46 - 53 ton (101,200 - 121,000 lb)	21.0	69'	21.50	70' 6"	15.77	51' 8"	17.76	58' 3"	3.46	11' 4"	0.90	1.17
	22.0	72'	22.40	73' 5"	16.59	54' 5"	18.31	60' 0"	3.64	11' 11"	0.80	1.04
60 - 68 ton (132,000 - 149,600 lb)	23.5	77'	23.50	77' 0"	17.00	55' 9"	19.95	65' 5"	3.95	12' 11"	1.50	1.96
70 - 78 ton (154,000 - 171,600 lb)	23.5	77'	23.71	77' 9"	17.48	57' 4"	19.67	64' 6"	4.04	13' 3"	1.60	2.09
	25.0	82'	25.15	82' 6"	18.80	61' 8"	20.52	67' 3"	4.10	13' 5"	1.50	1.96
80 - 95 ton (176,000 - 209,000 lb)	23.5	77'	23.96	73' 7"	17.41	57' 1"	19.98	65' 6"	4.31	14' 1"	1.60	2.09
	25.0	82'	25.38	83' 3"	18.66	61' 2"	20.86	68' 5"	4.46	14' 7"	1.60	2.09
100 - 125 ton (220,000 - 275,000 lb)	25.0	82'	25.11	82' 4"	18.69	61' 3"	17.06	55' 11"	5.37	17' 7"	1.80	2.35
	27.0	88'	27.02	88' 7"	20.59	67' 6"	17.64	57' 7"	5.48	17' 11"	1.80	2.35

* The above specifications are for reference only, actual working range may vary from machine models.
 ** For the benefit of continuous product improvement, specifications are subjected to change without prior notice.
 *** Different bucket design will affect the working envelop.

EIK PROVIDE SOLUTIONS FOR YOUR BUSINESS



Quarry

As one of the under-recognised contributor to modern day advancement, natural rocks from quarries are crushed and screened into rock aggregates for further processing with the help of EIK specially designed Rock Buckets.



Marine Dredging

Marine dredging carries the responsibility of cleaning and maintaining the natural waterways. Super Long Front with attachments like orange peel grab, buckets, will clear the bed of underwater by scooping all waste in shallow waters which will assist coastal protection, land reclamation and coastal redevelopment.



River

River, being the main source of life, has to be maintained with constant cleaning and dredging with Amphibious and robotically welded Super Long Front for its natural continuous flow.



Construction

In modern day construction, EIK specially designed High Reach Demolition Booms are highly sought after for its robustness and effectiveness and has contributed in the construction of new cities in the world.

Mining

Basic planning for mining operations will include where, when and what methods are to be used to excavate the natural deposit will include the use of reliable heavy machineries with robust attachments under the harshest environment.

Wetlands

EIK Marsh Buggy naturally excels in swampy and "difficult" conditions as it glides through with ease to help in maintaining its natural habitat.

Breakwater

The breakwater structure constructed for the purpose of forming an artificial harbour with a basin so protected from the effect of waves as is to provide safe berthing for fishing vessels. The equipment is required to carry out the construction consists of a stable floating platform. EIK Super Long Front helps to reach the demanding slope and depth profile required



EIK GROUP OF COMPANIES

EIK Engineering Sdn Bhd (HQ)

No. 10, Jalan SiLC 1/4,
Kawasan Perindustrian SiLC,
79200, Iskandar Puteri, Johor, Malaysia
Tel: +607 - 531 9922
Fax: +607 - 531 9919
Website : www.eikengineering.com
Email: sales@eikengineering.com.my
/ info@eikengineering.com

AMP Engineering Works Sdn Bhd

No 28, Jalan Astaka U8/84A,
Bukit Jelutong, 40150 Shah Alam, Selangor
Tel: +603 - 7859 9221
Fax: +603 - 7859 9231
Website : www.ampdredging.com
Email: ampoffice99@gmail.com

EIK Lam Engineering Sdn Bhd

24, Jalan Mega 1/4,
Taman Perindustrian Nusa Cemerlang,
79200 Nusajaya, Johor, Malaysia
Tel: +607 - 554 2700
Fax: +607 - 554 1785
Email: sales@eiklam.com.my

TCL Machinery (M) Sdn Bhd

No. 9, Jalan Tiong Emas 6,
Kawasan Perindustrian Tiong Nam,
81100 Johor Bahru, Johor, Malaysia.
Tel: +607 - 361 6546/ +607 - 364 8695
Fax : +607 - 364 8679
Website : www.tcl-machinery.com
Email: enquiry@tcl-machinery.com

REGIONAL SALES OFFICES

EIK Solutions LLC (United States)

14430 Grant Road, Cypress, Texas
77429 United States
Tel: +1 832-850-4590
Website : www.eiksolutions.com
Email: sales@eiksolutions.com

EIK Engineering Pte. Ltd (Singapore)

135 Jurong Gateway Road, #03-315
Singapore 600135
Tel: +65 - 9815 9685
Email: sales@eikengineering.com
/ info@eikengineering.com

EIK Engineering Sdn Bhd (Kuala Lumpur Branch)

No 28, Jalan Astaka U8/84A,
Bukit Jelutong, 40150 Shah Alam, Selangor
Tel: +603 - 7859 9221
Fax: +603 - 7859 9231
Email: sales_kl@eikengineering.com.my

EIK Engineering Sdn Bhd (Sarawak Branch)

Lot 1176, Section 66
Kuching Town Land District
Jalan Utama, Pending Industrial Estate
93450 Kuching, Sarawak, Malaysia
Tel: +6082 - 335 922
Fax: +6082 - 345 922
Email: sales_sawarak@eikengineering.com.my

EIK ENGINEERING SDN BHD

No. 10, Jalan SiLC 1/4, Kawasan Perindustrian SiLC,
79200 Iskandar Puteri, Johor, Malaysia.

E sales@eikengineering.com.my | info@eikengineering.com



www.eikengineering.com

